

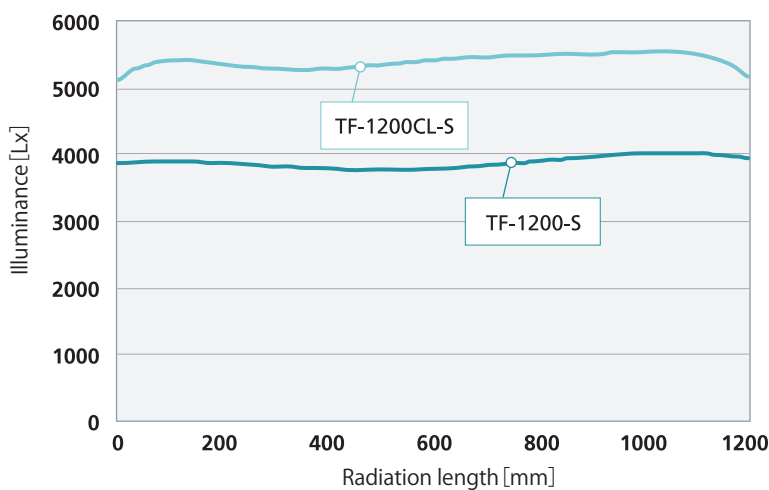
Transmission/Linear Lights

SUMITA's transmission lights are side emission type lighting equipment for line illumination, using a quartz rod. Ideal for vision inspection carried out with line sensors/cameras.

- Provides uniform illumination with little unevenness of light intensity
- Available to select radiation width between 2 - 10 mm and effective radiation length between 100 - 3600 mm
- Able to irradiate objects having low resistance to heat since its heat radiation amount is small
- Easy to maintenance such as lamp replacement since it is separated from lighting source
- Available with cover lens and cylindrical lens



Illuminance Data (Reference)



Sample products

TF-1200CL-S (with cylindrical lens) and TF-1200-S (without cylindrical lens)

Measuring conditions

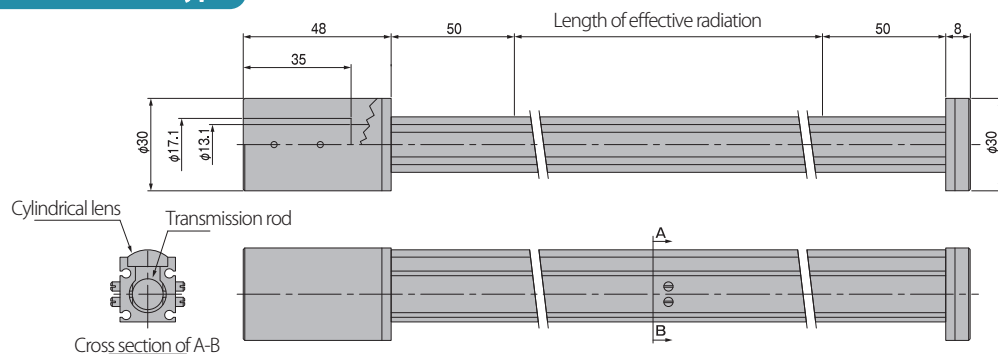
Halogen light source (100 W) and light guide ($\phi 10 \times L1500$)

TF-1200CL-S (with Cylindrical lens) W.D. : 50mm

TF-1200-S (without Cylindrical lens) W.D. : 20mm

One side Incident Type

Length of effective radiation: 100~1500mm



Both sides Incident Type

Length of effective radiation: 100~3600mm

