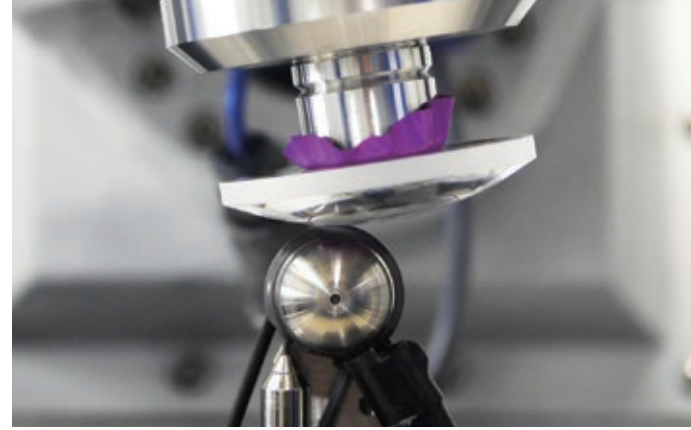


MRF

Magneto-Rheological Finishing

It is the way to polish a workpiece by means of the shear force generated by delivering the MR (magnetorheological) fluid containing abrasives into a rotating wheel, and plunging the workpiece into the abrasives, which is suitable for final polishing or polishing correction of precision optics.



The Equipment

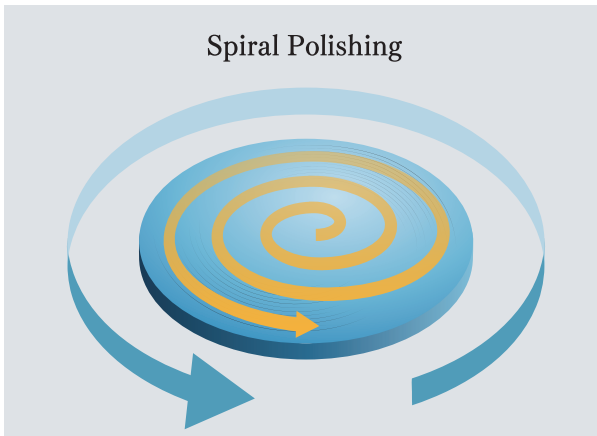
Q-Flex100

"Final polishing" is possible for workpieces from dia. 10mm to dia. 80mm. (including rectangular), spherical, aspherical and cylindrical shapes are available in the polishing processing.

*Both plano-convex and meniscus shapes are also available.

The Polishing Methods

Spiral Polishing



Raster Polishing

