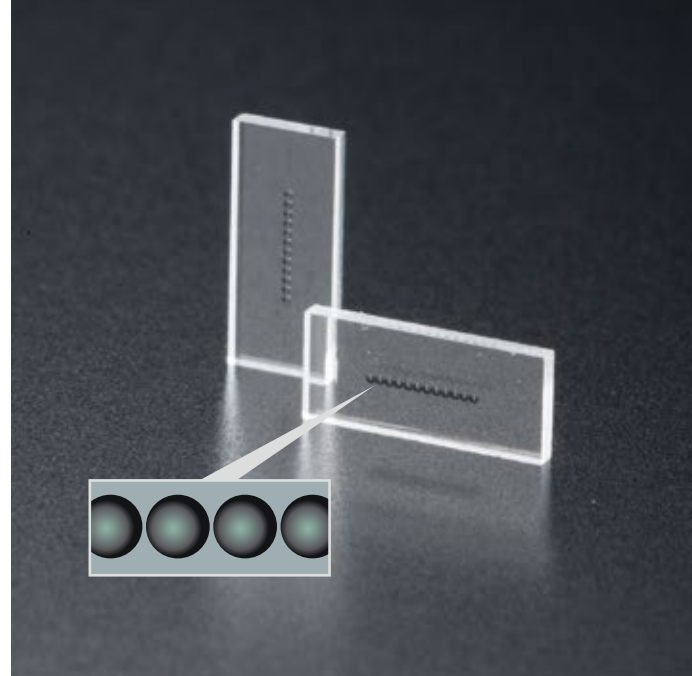


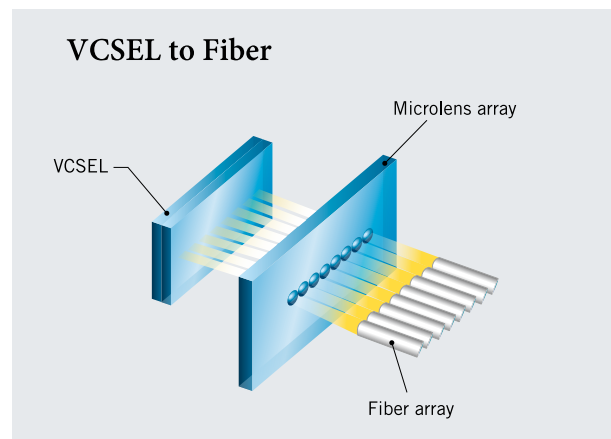
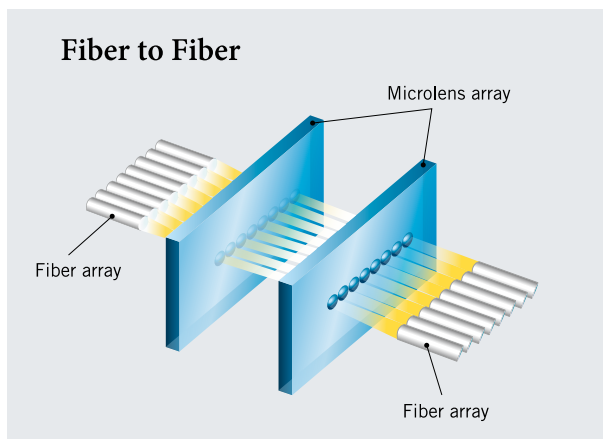
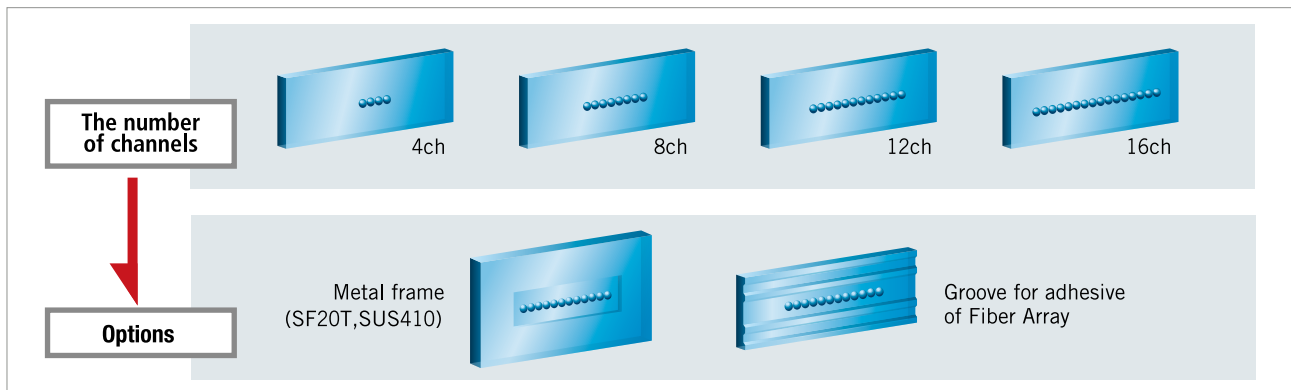
ASPHERICAL MICROLENS ARRAY

Glass which is used for Microlens Arrays have a high environment resistance and temperature properties. The glass enables micro lens arrays to correspond with telcordia Standards. We offer sample lenses of microlens array for colimates and LD coupling. The microlens array is manufactured at low cost by using Sumita's standard dies and is produced over at a rate of 10,000 per month in mass-production.



Applications

Colimeter Lens for telecommunication / Coupling Lens for telecommunication / Condenser Lens for LD



Specifications

Dimension	□ less than 7mm
Lens Thickness	more than 0.3mm
Number of Lenses	Upon Request
Lens Pitch Error	less than 1μm
Radius of Curvature	more than 150μm
Maximum Tilt	40°
PV Error	less than P-V=1μm
Surface Roughness	Ra0.030μm

•Lens custom made to your specification

Sample Specifications

Applications	for Collimator		for LD Coupling
Design Wavelength	1550nm	1550nm	850nm
Focal Length	0.6mm	0.35mm	0.22mm
Numerical Aperture NA	0.18	0.14	0.3x0.2
Lens Pitch	250μm	127μm	250μm
Number of Lenses	12	40	12
Lens Diameter	240μm	125μm	240μm
Lens Thickness	0.6mm	0.76mm	0.55mm
Lens Sag Value	25μm	10μm	38μm