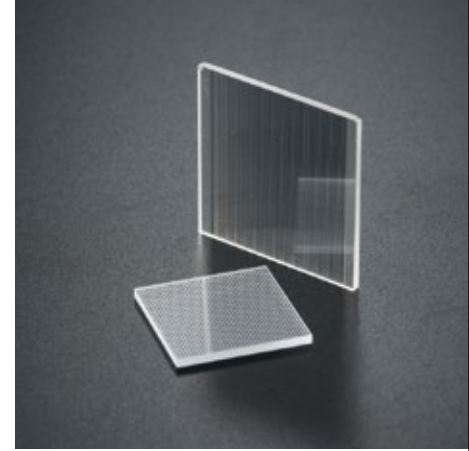


ASPHERICAL CYLINDRICAL LENS ARRAY

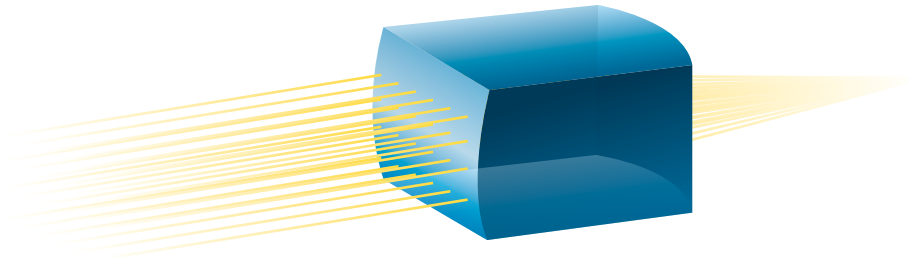
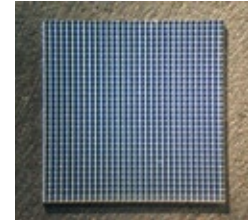
Minute, high-precision cylindrical lens is molded with die.

We manufacture aspheric cylindrical lens array molded with a precision die they are orthogonally different shape cylindrical lenses at both sides. The aspheric cylindrical lens array is optimum for optical integrator.



Applications

Optical fiber coupling, Light dispersion, Forming laser lines



Sample Specifications

Outside dimensions	8mmx8mm
Lens thickness	0.7mm
Number of lens	30x30
Lens pitch	0.250mm
Focal length	1.0mm
Curvature radius	0.69mm, 0.40mm

Example of special shapes

